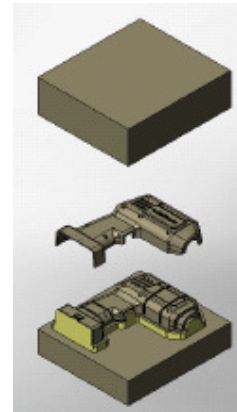
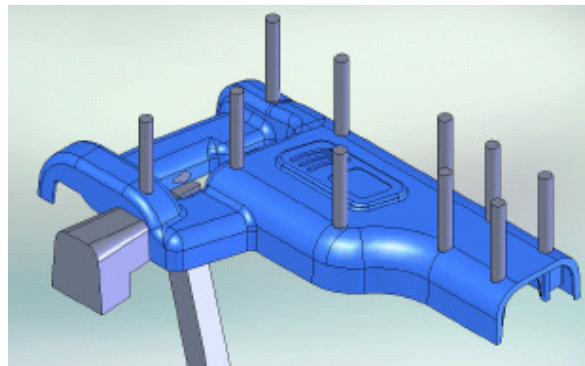
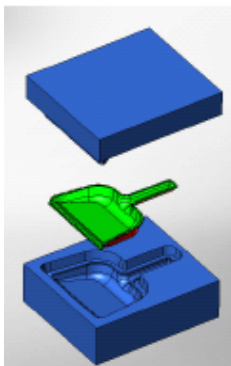


## MOLD DESIGN USING SOLIDWORKS 2009

Objective: Mold Design course will discuss about the fundamental techniques for mold creation. This will include:-

- Using specific DRAFT and UNDERCUT detection tools to analyze plastic models
- Using a general workflow for core/cavity creation – parting line, shut-off surface, parting surface and tooling splits.
- From the undercut detection, learn about creating side core, lifter and sub-inserts using the core function.
- Incorporate surfacing techniques to create advanced parting surface for complicated models.



### TARGET AUDIENCE

- ✓ Application engineer
- ✓ R&D engineer
- ✓ Product designer or engineer
- ✓ Industrial engineer

### METHODOLOGY

Practical hands-on with using computers, lecturing, discussions and case studies

### PREREQUISITE

To ensure a consistent learning experience for all students, participants should have:

- ✓ **Mechanical design experience**
- ✓ **Experience with the Windows™ operating system.**
- ✓ **Basic understanding of part design and drafting**
- ✓ **Attended both SW Essential & Advanced Part Modeling**

### DURATION – 1 DAYS

#### **PETALING JAYA**

22A, Jalan PJS 1/46  
46150 Petaling Jaya  
Selangor  
Tel: + 60 3 – 7783 6866  
Fax: + 60 3 – 7781 1185

#### **PERAK**

63, Jalan Perindustrian Silibin 1  
Kawasan Perindustrian Silibin  
30100 Ipoh, Perak  
Tel: + 60 5 – 527 3133  
Fax: + 60 5 – 527 3163

#### **PENANG**

68A, Jalan Perai Jaya 4  
13700 Prai  
Penang  
Tel: + 60 4 – 399 5571  
Fax : + 60 4 – 399 5572

#### **JOHOR**

11-A, Jalan Jati 2, Taman Nusa  
Bestari Jaya Bandar Nusa Jaya  
81300 Skudai, Johor  
Tel: + 60 7 – 512 7978  
Fax: + 60 7 – 512 2162