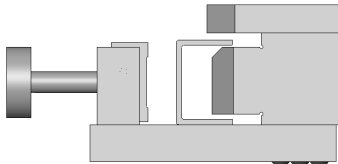


JIGS & FIXTURES DESIGN IN SOLIDWORKS

Duration : 2 days
Time : 9:00am to 5:00pm

Pre-requisites:

- Participants shall have attended SolidWorks Essential course.



Objective:

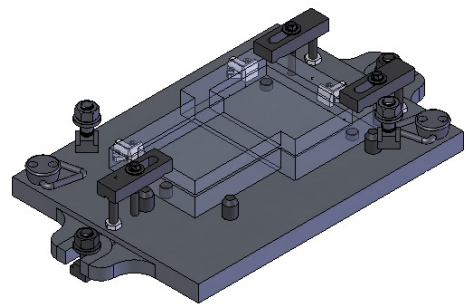
To provide tooling engineers with a straight forward learning approach in using 3D CAD Modeling software to design jigs & fixtures. It provides basic knowledge in part modeling, assembly and drawing techniques adequate for design of jigs & fixtures. General workflow for designing jigs & fixtures will be discussed in this course.

Who Should Attend:

- Tool designers
- Design engineers

Topics

- Introduction to jigs & fixtures concept
 - Functions of jigs & fixtures in industry
 - Differences between jigs & fixtures
- Introducing stages of design of a fixture
 - Import existing 3D workpiece model
 - Using existing standard library components as reference in fixture design.
- Basic Parts Modeling skills
 - Basic 2D Sketching technique
 - Create Solid-based models
- Assembly skills
 - Visualize the project model in 3D
 - Assembling different components to complete the project models
 - Designing components within an assembly model for proper location
- Interference checking
 - Detect location of interferences
 - Modifying design intent of solid models
- Details technical drawing and bill of materials
 - Details technical drawing preparation
 - Generate complete and detailed Bill of Material information



Class Format

- 2 days

PETALING JAYA

22A, Jalan PJS 1/46
46150 Petaling Jaya
Selangor
Tel: + 60 3 – 7783 6866
Fax: + 60 3 – 7781 1185

PERAK

63, Jalan Perindustrian Silibin 1
Kawasan Perindustrian Silibin
30100 Ipoh, Perak
Tel: + 60 5 – 527 3133
Fax: + 60 5 – 527 3163

PENANG

68A, Jalan Perai Jaya 4
13700 Prai
Penang
Tel : + 60 4 – 399 5571
Fax : + 60 4 – 399 5572

JOHOR

11-A, Jalan Jati 2, Taman Nusa
Bestari Jaya Bandar Nusa Jaya
81300 Skudai, Johor
Tel: + 60 7 – 512 7978
Fax: + 60 7 – 512 2162



- Practical hand-on with computer, lecture-based and case study models discussion

PETALING JAYA

22A, Jalan PJS 1/46
46150 Petaling Jaya
Selangor
Tel: + 60 3 – 7783 6866
Fax: + 60 3 – 7781 1185

PERAK

63, Jalan Perindustrian Silibin 1
Kawasan Perindustrian Silibin
30100 Ipoh, Perak
Tel: + 60 5 – 527 3133
Fax: + 60 5 – 527 3163

PENANG

68A, Jalan Perai Jaya 4
13700 Prai
Penang
Tel : + 60 4 – 399 5571
Fax : + 60 4 – 399 5572

JOHOR

11-A, Jalan Jati 2, Taman Nusa
Bestari Jaya Bandar Nusa Jaya
81300 Skudai, Johor
Tel: + 60 7 – 512 7978
Fax: + 60 7 – 512 2162